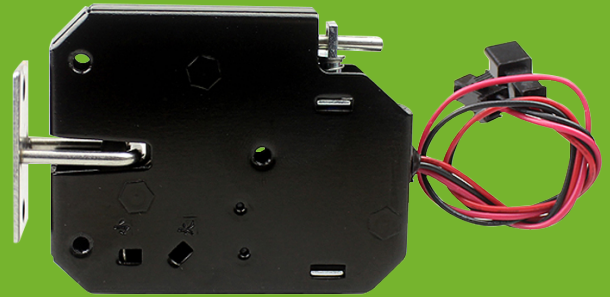


Cabinet Locking System Work With Locking Drawer Cabinet



CB-96B, CB-96S

Specifications

Fail-secure type		Power	24.0W
Voltage	DC12V 1.8A (CB-96S)	Insulation Class	B
	DC24V 1.5A (CB-96B)	Finish	Cataphoresis(or OEM)
Signal Output	Yes	Working Temperature	-5 C ~55 C
Lock size	73 x 58 x 13.3mm	Working life	1 million times(10%energized)
Resistance	6	Warranty	1 Year

Dimensions

